

Where Does the Power Become AC in an AC Power Source?

Kirk T. McDonald

Joseph Henry Laboratories, Princeton University, Princeton, NJ 08544

(February 27, 2007)

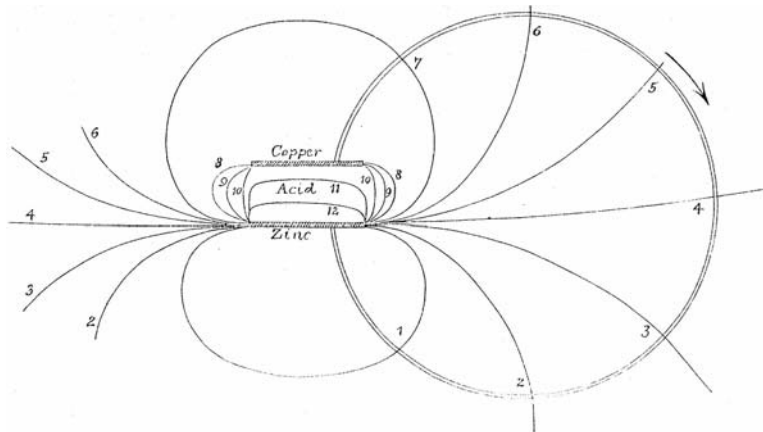
1 Problem

According to Faraday and Maxwell, the electromagnetic field stores energy and momentum. The flow of energy associated with electric and magnetic fields \mathbf{E} and \mathbf{H} was quantified by Poynting [1] in terms of the vector

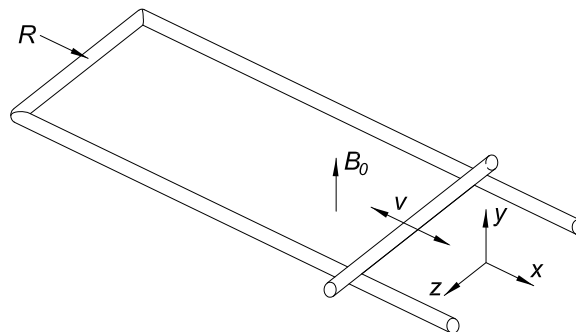
$$\mathbf{S} = \mathbf{E} \times \mathbf{H}, \quad (1)$$

in SI units, whose magnitude is the energy crossing unit area perpendicular to \mathbf{S} per unit time.

Poynting discussed the flow of energy from a battery to a resistive loop of wire. As shown in his figure below, the power does not flow down the wire of the loop, but rather it flows through the air/vacuum along lines of the vector \mathbf{S} and enters the wire at right angles to its surface.¹



Discuss the flow of power in an electromechanical power supply, as sketched below.



¹A more detailed discussion of power flow in a DC current loop is given in [2].

A metal bar slides in the x direction along a U-shaped wire with velocity $\mathbf{v} = v \cos \omega t \hat{\mathbf{x}}$ through a region of uniform magnetic field

$$\mathbf{B}_0 = B_0 \hat{\mathbf{y}}. \quad (2)$$

The metal bar is aligned along the z direction, with distance l between its two points of contact with the U-shaped wire. All materials in this example have magnetic permeability μ_0 .

For an application of this type of AC generator in watches, see [3].

2 Solution

It will be difficult to give a complete analytic description of the Poynting vector throughout the circuit, so we will content ourselves with a characterization of the energy flow across the surface of the most relevant circuit elements.

First, we recall the well-known example² of a cylindrical resistor of radius a , length l and resistivity ρ . The corresponding resistance is $R = \rho l / \pi a^2$, so that when the resistor carries current I along its axial direction, the power consumed is $P = I^2 R$. An axial electric field $E_z = \rho J = \rho I / \pi a^2$ exists inside the resistor to drive the current, and an azimuthal magnetic field $H_\phi = I / 2\pi a$ exists at the surface of the resistor. The Poynting vector at the cylindrical surface of the resistor points inward, $S_r = -E_z H_\phi = -\rho I^2 / 2\pi^2 a^3$. Since the Poynting vector vanishes on the two circular ends of the resistor, the total power flowing into the resistor via electromagnetic fields is the Poynting vector $|S_r|$ times the surface area $2\pi a l$, namely $P_{\text{in}} = I^2 \rho l / \pi a^2 = I^2 R$. Thus, the inward electromagnetic energy flow described by the Poynting vector \mathbf{S} at the surface of the resistor accounts for its $I^2 R$ power consumption.

2.1 Electromechanical Power Supply

2.1.1 The Motional EMF and Associated Electric Fields

According to Faraday's law, the EMF \mathcal{E} around a circuit is equal to the (negative) time rate of change of the magnetic flux through the circuit. In the present example we find

$$\mathcal{E} = vlB_0. \quad (3)$$

However, this formulation does not localize the source of the EMF. It is perhaps obvious (to a lab-frame observer) that the EMF is generated in the portion of the sliding bar that is immersed in the external magnetic field. Here, we give an analysis that makes this conclusion more explicit.

We perform this analysis in the lab frame, but some quantities are best obtained by transformation of their values in rest frame of the sliding bar, in which quantities are designated with the superscript $*$. The speed v of the bar in the lab frame is much less than the speed of light c , so we will ignore effects of order v^2/c^2 , and write $\gamma = 1/\sqrt{1 - v^2/c^2} \approx 1$.

²For a typical textbook discussion, see Example 8.1 of [4].

Then, the external magnetic field in the frame of the sliding bar is

$$\mathbf{B}_0^* = \gamma \mathbf{B}_0 \approx \mathbf{B}_0 = B_0 \hat{\mathbf{y}}. \quad (4)$$

In the rest frame of the sliding bar, there is an electric field

$$\mathbf{E}_0^* = \gamma \mathbf{v} \times \mathbf{B}_0 \approx \mathbf{v} \times \mathbf{B}_0 = v \hat{\mathbf{x}} \times B_0 \hat{\mathbf{y}} = v B_0 \hat{\mathbf{z}}, \quad (5)$$

wherever there is the magnetic field (4). In particular, this electric field exists over the length l of the bar, it is often said that the bar therefore acts like a battery of voltage

$$\mathcal{E} = E_0^* l = v l B_0. \quad (6)$$

If the total load resistance is R , then a current

$$I = \mathcal{E}/R = \frac{v l B_0}{R} \quad (7)$$

flows in the circuit, and the power consumption is

$$P = I^2 R = \frac{\mathcal{E}^2}{R} = \frac{v^2 l^2 B_0^2}{R}. \quad (8)$$

If the bar has resistivity ρ and radius a , then the longitudinal electric field inside the bar must actually be

$$\mathbf{E}_{\parallel}^* = \rho \mathbf{J} = \frac{\rho I}{\pi a^2} \hat{\mathbf{z}}, \quad (9)$$

rather than the field (5). Similarly, there must be longitudinal electric fields in all resistive wires in the rest of the circuit. In greater detail, the motional field (5) leads to charge accumulations on the surface of the wire as needed to establish the longitudinal fields that drive the current. Inside the bar, the field due to this charge accumulation opposes the motional field (5) and reduces the longitudinal field to strength (9). Of course, the line integral of the longitudinal electric field around the circuit remains $\mathcal{E} = v l B_0$.

2.1.2 Mechanical Power Equals Electrical Power

The current flows in the $+z$ -direction inside the sliding bar when its velocity is in the $+x$ -direction. Hence, the sliding bar experiences a Lorentz force (in the lab frame)

$$\mathbf{F} = I l \hat{\mathbf{z}} \times \mathbf{B}_0 = -I l B_0 \hat{\mathbf{x}} = -\frac{v l^2 B_0^2}{R} \hat{\mathbf{x}}. \quad (10)$$

An external force $\mathbf{F}_{\text{ext}} = -\mathbf{F}$ must be applied to keep the bar sliding with velocity \mathbf{v} . The power delivered into the system by this external mechanical force is

$$P_{\text{ext}} = \mathbf{F}_{\text{ext}} \cdot \mathbf{v} = \frac{v^2 l^2 B_0^2}{R} = P. \quad (11)$$

That is, an external mechanical system provides the power that is consumed by $I^2 R$ electrical heating.³

³We can also give an analysis in the rest frame of the sliding bar (the $*$ frame). For this, we suppose that the magnet which produces the field \mathbf{B}_0 is at rest in the lab frame. When the field exerts force \mathbf{F} on the sliding bar (in the lab frame), there is a reaction force $-\mathbf{F}$ on the magnet. To keep the magnet at rest there must be an external force $\mathbf{F}'_{\text{ext}} = -(-\mathbf{F}) = -\mathbf{F}_{\text{ext}}$ on it. In the rest frame of the sliding bar, the magnet has velocity $-\mathbf{v}$, so the force \mathbf{F}'_{ext} on the moving magnet must deliver power $P^* = \mathbf{F}'_{\text{ext}} \cdot -\mathbf{v} = \mathbf{F}_{\text{ext}} \cdot \mathbf{v} = P$.

2.1.3 Electric and Magnetic Fields at the Surface of the Sliding Bar

As seen in sec. 2.1.2, in the lab frame the power dissipated in the circuit appears to be provided by the mechanical forces on the sliding bar, while in the rest frame of the sliding bar, the power is provided by the forces on the magnet that produces the field \mathbf{B}_0 .⁴ We will work in the lab frame, where the task now is to describe via the Poynting vector (1) (or a part thereof) the flow of power (11) from the sliding bar through the electromagnetic field to the resistive load. We need to know the total electric field \mathbf{E} and total magnetic field $\mathbf{H} = \mathbf{B}/\mu_0$ at the surface of the bar to calculate $\mathbf{S} = \mathbf{E} \times \mathbf{H} = \mathbf{E} \times \mathbf{B}/\mu_0$.

Thus far, the only field identified in the lab frame is the external field \mathbf{B}_0 , given by eq. (4). Other electric and magnetic fields are identified in the rest frame of the sliding bar, and must be transformed to the lab frame. First, there is the magnetic field due to the current I in the circuit. At the surface of the sliding bar, we approximate this field as that if the sliding bar had infinite length, and neglect the small contribution due to the current in the U-shaped wire. This magnetic field is azimuthal,

$$\mathbf{B}_\phi^* = \frac{\mu_0 I}{2\pi a} \hat{\phi}. \quad (12)$$

So far, we have only identified the electric field \mathbf{E}_\parallel^* of eq. (9) that drives the current inside the sliding bar. In addition, there is the Hall field [5],

$$\mathbf{E}_H^* = \mathbf{v}_d^* \times \mathbf{B}^* \approx \mathbf{v}_d^* \times \mathbf{B}_0 = -v_d B_0 \hat{\mathbf{x}}, \quad (13)$$

needed to counteract the Lorentz force on the drifting, conduction electrons, whose drift velocity is $\mathbf{v}_d^* = v_d \hat{\mathbf{z}}$.⁵

Because the speed v of the sliding bar is much less than c , the magnetic field \mathbf{B}_ϕ appears in the lab frame as the magnetic field $\mathbf{B}_\phi \approx \mathbf{B}_\phi^*$, as well as the electric field⁶

$$\mathbf{E}_v \approx -\mathbf{v} \times \mathbf{B}_\phi^* = -\mathbf{v} \times \frac{\mu_0 I}{2\pi a} \hat{\phi} = -v \hat{\mathbf{x}} \times \frac{\mu_0 I}{2\pi a} (-\sin \phi \hat{\mathbf{x}} + \cos \phi \hat{\mathbf{y}}) = -\frac{\mu_0 v I \cos \phi}{2\pi a} \hat{\mathbf{z}}. \quad (14)$$

Similarly, the electric field $\mathbf{E}^* = \mathbf{E}_\parallel^* + \mathbf{E}_H^*$ at the surface of the sliding bar in its rest frame transforms to the lab-frame electric field

$$\mathbf{E}_\parallel + \mathbf{E}_H \approx \frac{\rho I}{\pi a^2} \hat{\mathbf{z}} - v_d B_0 \hat{\mathbf{x}}, \quad (15)$$

as well as to the lab-frame magnetic field

$$\mathbf{B}_v \approx \mathbf{v}/c^2 \times (\mathbf{E}_\parallel^* + \mathbf{E}_H^*) = -\frac{\rho v I}{\pi a^2 c^2} \hat{\mathbf{y}}. \quad (16)$$

The magnetic field \mathbf{B}_v is of order $1/c^2$, so we ignore it in the same approximation as taking γ to be 1.

⁴This is an illustration of the relativity of energy flow, also discussed in [6].

⁵See [7] for a discussion of the relation between the Hall field (13) and the Lorentz force (10) felt by the lattice ions of the sliding bar.

⁶The field \mathbf{E}_v is also equal to $-\partial \mathbf{A}/\partial t$, where \mathbf{A} is the time-dependent vector potential of the moving magnetic field \mathbf{B}_ϕ .

The total electric field in the lab frame at the surface of the sliding bar is (neglecting terms of order $1/c^2$)

$$\mathbf{E} = \mathbf{E}_{\parallel} + \mathbf{E}_H + \mathbf{E}_v \approx \frac{\rho I}{\pi a^2} \hat{\mathbf{z}} - v_d B_0 \hat{\mathbf{x}} - \frac{\mu_0 v I \cos \phi}{2\pi a} \hat{\mathbf{z}}, \quad (17)$$

and the magnetic field is

$$\mathbf{B} \approx \mathbf{B}_0 + \mathbf{B}_{\phi} \approx B_0 \hat{\mathbf{y}} + \frac{\mu_0 I}{2\pi a} \hat{\phi}. \quad (18)$$

2.1.4 Poynting Vector at the Surface of the Sliding Bar in the Lab Frame

The Poynting vector of fields (17) and (18) at the surface of the sliding bar contains six terms,

$$\begin{aligned} \mathbf{S} &= \frac{(\mathbf{E}_{\parallel} + \mathbf{E}_H + \mathbf{E}_v) \times (\mathbf{B}_0 + \mathbf{B}_{\phi})}{\mu_0} \\ &= \frac{\mathbf{E}_{\parallel} \times \mathbf{B}_0}{\mu_0} + \frac{\mathbf{E}_H \times \mathbf{B}_0}{\mu_0} + \frac{\mathbf{E}_v \times \mathbf{B}_0}{\mu_0} + \frac{\mathbf{E}_{\parallel} \times \mathbf{B}_{\phi}}{\mu_0} + \frac{\mathbf{E}_H \times \mathbf{B}_{\phi}}{\mu_0} + \frac{\mathbf{E}_v \times \mathbf{B}_{\phi}}{\mu_0} \\ &= -\frac{\rho I B_0}{\mu_0 \pi a^2} \hat{\mathbf{x}} - \frac{v_d B_0^2}{\mu_0} \hat{\mathbf{y}} + \frac{v I B_0}{2\pi a} (\cos^2 \phi \hat{\mathbf{r}} - \cos \phi \sin \phi \hat{\phi}) - \frac{\rho I^2}{2\pi^2 a^3} \hat{\mathbf{r}} - \frac{v_d I B_0 \cos \phi}{2\pi a} \hat{\mathbf{z}} \\ &\quad + \frac{\mu_0 v I^2 \cos \phi}{4\pi^2 a^2} \hat{\mathbf{r}}, \end{aligned} \quad (19)$$

noting that $\hat{\mathbf{x}} = \cos \phi \hat{\mathbf{r}} - \sin \phi \hat{\phi}$ and $\hat{\mathbf{y}} = \sin \phi \hat{\mathbf{r}} + \cos \phi \hat{\phi}$. Only the third and fourth terms of eq. (19) lead to net electromagnetic power flow across the surface of the sliding bar,

$$P_{\text{leaving bar}} = \oint_{\text{bar}} \mathbf{S} \cdot d\mathbf{Area} = \frac{v l B_0 I}{2} - \frac{\rho l I^2}{\pi a^2} = \frac{VI}{2} - I^2 R_{\text{bar}}. \quad (20)$$

Thus, we can account for only one half of the power, VI , consumed in the circuit as emanating from the sliding bar.⁷

2.1.5 Poynting Vector at the Surface of the Sliding Bar in the Bar's Frame

The electric field at the surface of the sliding bar in its rest frame (the \star frame) is

$$\mathbf{E}^{\star} = \mathbf{E}_{\parallel}^{\star} + \mathbf{E}_H^{\star} \approx \mathbf{E}_{\parallel} + \mathbf{E}_H \approx \frac{\rho I}{\pi a^2} \hat{\mathbf{z}} - v_d B_0 \hat{\mathbf{x}} \quad (21)$$

and the magnetic field is

$$\mathbf{B}^{\star} \approx \mathbf{B} \approx \mathbf{B}_0 + \mathbf{B}_{\phi} \approx B_0 \hat{\mathbf{y}} + \frac{\mu_0 I}{2\pi a} \hat{\phi}. \quad (22)$$

⁷When the sliding bar is assumed to be a perfect conductor, I obtain full agreement between the integral of the Poynting vector and the power VI dissipated by the resistor. See sec. 4 of [8].

The Poynting vector at the surface of the sliding bar in the $*$ frame is

$$\begin{aligned}
\mathbf{S}^* &= \frac{\mathbf{E}^* \times \mathbf{B}^*}{\mu_0} \approx \frac{(\mathbf{E}_{\parallel} + \mathbf{E}_H) \times (\mathbf{B}_0 + \mathbf{B}_{\phi})}{\mu_0} \\
&= \frac{\mathbf{E}_{\parallel} \times \mathbf{B}_0}{\mu_0} + \frac{\mathbf{E}_H \times \mathbf{B}_0}{\mu_0} + \frac{\mathbf{E}_{\parallel} \times \mathbf{B}_{\phi}}{\mu_0} + \frac{\mathbf{E}_H \times \mathbf{B}_{\phi}}{\mu_0} \\
&= -\frac{\rho I B_0}{\mu_0 \pi a^2} \hat{\mathbf{x}} - \frac{v_d B_0^2}{\mu_0} \hat{\mathbf{y}} - \frac{\rho I^2}{2\pi^2 a^3} \hat{\mathbf{r}} - \frac{v_d I B_0 \cos \phi}{2\pi a} \hat{\mathbf{z}}.
\end{aligned} \tag{23}$$

Only the third term of eq. (23) leads to net electromagnetic power flow across the surface of the sliding bar,

$$P_{\text{leaving bar}}^* = \oint_{\text{bar}} \mathbf{S}^* \cdot d\mathbf{Area} = -\frac{\rho l I^2}{\pi a^2} = -I^2 R_{\text{bar}}, \tag{24}$$

which confirms the comment in sec. 2.1.2 that in the rest frame of the sliding bar, the bar does not appear to be the source of electromagnetic energy that is consumed in the rest of the circuit.

References

- [1] J.H. Poynting, *On the Transfer of Energy in the Electromagnetic Field*, Phil. Trans. Roy. Soc. London **175**, 343 (1884), http://puhep1.princeton.edu/~mcdonald/examples/EM/poynting_ptrsl_175_343_84.pdf
- [2] M. Heald, *Electric fields and charges in elementary circuits*, Am. J. Phys. **52**, 522 (1984), http://puhep1.princeton.edu/~mcdonald/examples/EM/heald_ajp_52_522_84.pdf
- [3] R. Sigelmann, *Fundamentals of Tuning Fork Timepieces*, http://puhep1.princeton.edu/~mcdonald/examples/EM/sigelmann_tuning_fork_timepieces.pdf
- [4] D.J. Griffiths, *Introduction to Electrodynamics*, 3rd ed. (Prentice Hall, Upper Saddle River, NJ, 1999).
- [5] E.H. Hall, *On a New Action of the Magnet on Electric Currents*, Am. J. Math. **2**, 287 (1879), http://puhep1.princeton.edu/~mcdonald/examples/EM/hall_ajm_2_287_79.pdf
- [6] K.T. McDonald, *Relativity of Steady Energy Flow* (Nov. 3, 2007), <http://puhep1.princeton.edu/~mcdonald/examples/1dgas.pdf>
- [7] W.R. McKinnon, S.P. McAlister and C.M. Hurd, *Origin of the force on a current-carrying wire in a magnetic field*, Am. J. Phys. **49**, 493 (1981), http://puhep1.princeton.edu/~mcdonald/examples/EM/mckinnon_ajp_49_493_81.pdf
- [8] K.T. McDonald, *Perfectly Conducting Cylinder in an External, Static Magnetic Field* (Oct. 29, 2011), http://puhep1.princeton.edu/~mcdonald/examples/perfect_cylinder.pdf